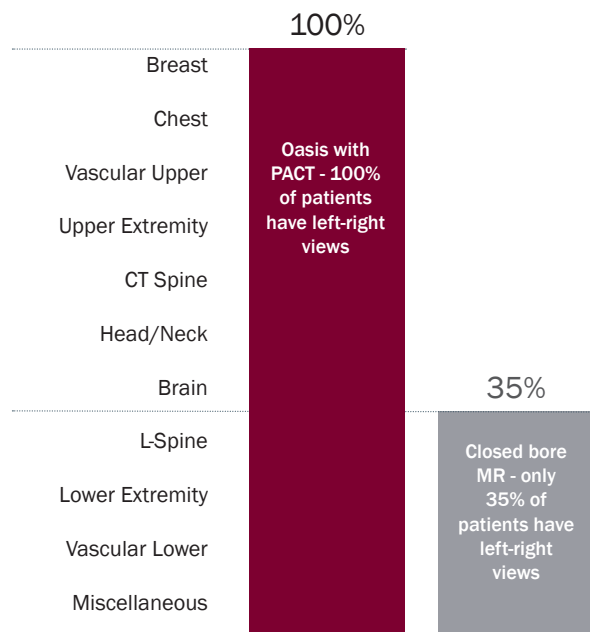


# Oasis™ vs 70cm bore



## Oasis provides the ultimate experience

- Patient's view is never obstructed
- Family members and technologist can maintain constant visual interaction with patient
- 660 lb weight limit and 82 cm table
- 2/3 of all patients scanned in a 70 cm or wide bore MRI have their head in the tunnel
- Oasis, with 1.2T vertical field magnet, provides same image quality as 1.5T
- All patients and all anatomy scanned at isocenter on Oasis
- Exceptional wrist and shoulder imaging
- Leading motion compensation capability - RADAR
- Wide array of pulse sequences
- All planes and all coils
- Complete motion-free studies



Visit us online at [rasloimaging.com](http://rasloimaging.com)

Digital Medical Imaging (DMI)

522 East Plaza Drive • Santa Maria CA 93454 • Ph: (805) 928-3673 • F: (805) 928-9588